

# Inspired by you



Prairie Ridge  
HEALTH

2021 Annual Report

## **The** *Mission* **that inspires us**

By building caring relationships with those we serve, we guide the journey to health and wellness.

## **The** *Vision* **that drives us**

Our team will be your preferred choice for personalized high quality health CARE, wellness and education provided in a compassionate and innovative environment.

## **The** *Values* **that guide us**

As we come to work each day, a certain set of values are at the forefront of all we do. These are our CARE values, and we are dedicated to:

### **C**ommunication and Listening

Effective communication and active listening result in understanding

### **A**ttitude

A positive and honest attitude produces a pleasant atmosphere

### **R**espect and Teamwork

Respect for ourselves and others fosters teamwork

### **E**mpathy and Compassion

Awareness of the emotional and physical needs of others creates empathy and compassion

# *A Message* inspired by resilience

2021 was long and difficult, both mentally and physically, for not only our team, but also our communities. We all experienced personal loss, life changes, stress, and anxiety. Through it all, our team remained committed to the health and wellbeing of our patients, each other, and our communities – a family caring for our family. I am proud of our team and the way we remained united in our goal to provide the best possible care for our patients and their families.

In 2021, we broke ground for the construction of a new clinic at 134 Corporate Drive, just off of Hwy 151 and Industrial Drive, in Beaver Dam. The new clinic building opened in February of 2022 and offers an enlarged therapy area and additional space for more providers. Services include Family Medicine, General Surgery, Clinical Nutrition and Diabetes Services, OB/GYN Services, Orthopedics, and Physical and Occupational Therapy.

We also welcomed three new providers to the Prairie Ridge Health Clinic – Katheryn Kaldor, DO, Michele Bryan, MD, and Bridget Sharkey, APNP, FNP.

Our new Rehabilitation Services area on the third floor of the Prairie Ridge Health Clinic in Columbus is now open. In addition, we created a designated space for our Cardiac Rehab Program and were fortunate enough to receive a gift of \$30,000 from the Farmers & Merchants Union Bank in Columbus to purchase a new telemetry system for our patients.

We opened our vaccine clinic in January 2021 and by December 29, 2021, had fully vaccinated over 6,200 community members, administered over 14,000 doses of vaccine and given 1,756 third doses and boosters of the COVID-19 vaccine to eligible individuals. In addition, Prairie Ridge Health has administered 110 monoclonal antibody treatments to prevent severe illness and potential subsequent hospitalization for our patients.

Our patients, their needs and their families have kept us going throughout this pandemic. We are grateful to be able to serve the community and help you through this pandemic. Thank you for your continued respect, compassion and support.



**John Russell, President & CEO**



**John Russell  
President & CEO**



# Our Medical Staff

## Family Practice

Kristine Braker, APNP, FNP  
Michelle Bryan, MD  
Colleen Cassidy, MD  
Rene Gellings, PA-C  
Christopher Kleppe, DO  
Elizabeth Larson, MD  
Sarah Meyer, APNP, FNP  
Veronica Minier, MD  
Bridget Sharkey, APNP, FNP

## General Surgery

Gary Galvin, MD  
Robb Whinney, DO

## Internal Medicine

Dawn Faust, APNP  
Bruce A. Kraus, MD  
Asghar Marwat, MD  
Sam Poser, MD

## Internal Medicine/ Cardiology

Rolf Poser, MD  
Brian Bachhuber, MD  
Sheng Jing Dong, MD  
Frank Jung, MD  
Benjamin Kleiber, MD  
Peter Lee, MD  
Jasdeep Sidhu, MD

## Internal Medicine/ Pediatrics

Jean Carstensen, MD

## Obstetrics & Gynecology

Leslie Alzuhn-Hansen, MD  
Katheryn Kaldor, DO  
Mark Torres, DO

## Obstetrics

Michelle Bryan, MD  
Elizabeth Larson, MD  
Veronica Minier, MD

## Lactation Consultant

Joan Young, APNP

## Pediatrics/ Cardiology

Andrea Rock, MD  
Cassandra Sung, MD

## Orthopedics

Robert Coe, MD  
Tiana Imhoff, PA-C  
Judy MacDonald, APNP  
Matthew Niesen, MD  
Andrew Tratar, PA-C  
Mandy Wedderspoon, PA-C

## Ophthalmology

Thomas Castillo, DO  
Jay Wilkins, MD  
Michael Yablick, MD

## Oncology

Michael Frontiera, MD  
Pallavi Kopparchy, MD

## Pathology

Rakesh Sarda, MD  
Madhuchhanda Roy, PhD  
Kathryn Swartz, MD

## Podiatry

Robert Greytak, DPM  
Rolf Hansen, DPM

## Rheumatology

Daniel Malone, MD



**Dawn Faust, APNP**  
Internal Medicine

**Katheryn Kaldor, DO**  
OB/GYN

## Anesthesia

Tom Burman, CRNA  
Tricia Rocolo, CRNA  
Andrew Sacquitne, CRNA  
J. Craig Vana, CRNA

## ENT/ Otolaryngology

Lindsay Lohaus, PA-C  
Justin McNamar, MD

## Infectious Disease

Garry Jean-Louis, MD

## Emergency Medicine

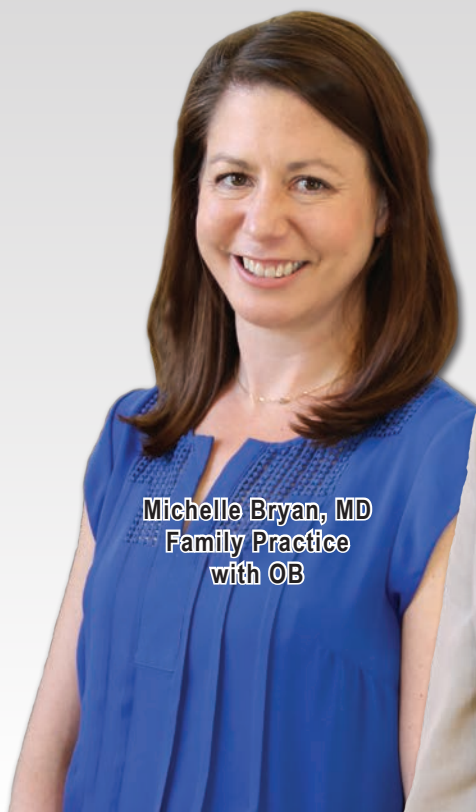
Steven Indra, DO  
Nathaniel Brown, MD  
Andrew Foster, MD  
Elizabeth Funk, MD  
Elana Grier, DO  
Michael Halberg, MD  
Benjamin Hecht, DO  
Melissa Leib, MD  
Michael Lutes, MD  
Jessica Miller, MD  
Scott Schlais, MD  
Barrett Shoults, MD  
Eric Snell, DO  
Christopher Thomas, DO  
Adam Tuite, MD  
John Van Roo, MD  
Christopher Vandivort, MD

## Radiology

Mark Rich, MD  
James Andersen, MD  
Richard Baker, Jr. MD  
Harold Bennett, MD, PhD  
Gregg Bogost, MD  
Cenon Buencamino, MD  
David Clifton, MD  
Timothy Crummy, MD  
Douglas Davis, MD  
Ronald Dolin, MD  
Adam Figi, MD  
Samuel Gibson, MD  
Daniel Hoefler, MD  
Daniel Holt, MD  
Neil Kennedy, MD  
Douglas Kitchin, MD  
Jeffrey Klein, MD

## Radiology

Andrew Laczniak, MD  
Shawn McGuire, MD  
Sally McKinnon, MD  
Eric Monat, MD  
Feras Mossa-Basha, MD  
Emily Norman, MD  
B. Dustin Pooler, MD  
Alessandro Rossi, MD  
Andrew Schemmel, MD  
Shawyon Shadman, MD  
Sean Shannahan, MD  
Cary Shlimovitz, MD  
Matthew Shore, MD  
Christopher Wedding, MD  
Robert Wells, MD



**Michelle Bryan, MD**  
Family Practice  
with OB



**Robert Coe, MD**  
Orthopedics



**Andrew Tratar, PA-C**  
Orthopedics

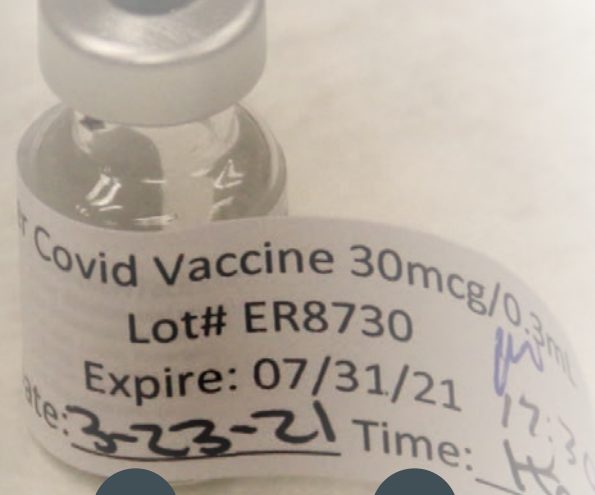


# Vaccinating

our community

On December 16, 2020 we received our first 100 doses of Pfizer COVID-19 vaccine and vaccinated our first team member at Prairie Ridge Health.

Our vaccine clinic opened in January 2021. By the end of the year we had fully vaccinated over 6,200 community members, administered over 14,000 doses of vaccine and given 1,756 third doses and boosters of the COVID-19 vaccine to eligible individuals.



**December 16, 2020**

**First 100 doses of Pfizer COVID-19 vaccine delivered to Prairie Ridge Health.**

**Jan. 13, 2021**

**PRH launches virtual waiting list on website in preparation for vaccinating Phase 1B.**

**Jan. 20**

**DHS gives the green light to move forward vaccinating Phase 1B. PRH averages 780 vaccinations a week.**

**Jan. 26**

**DHS announces future groups eligible for vaccine beginning March 1.**

**March 22**

**PRH celebrates administering 5,000 doses of the COVID-19 vaccine.**

**May 17**

COVID-19 Vaccines begin to be administered at the Prairie Ridge Health Clinic in Columbus. Vaccine is offered to patients on a walk-in basis.

**May 19**

Mobile vaccine clinic is held at Prairie Athletic Club in Sun Prairie to meet the needs of those age 12 and older.

**October 29**

CDC approves Emergency Use Authorization for Pfizer COVID-19 vaccine for ages 5+.



**March 23**

Farmers & Merchants Union Bank in Columbus hosts onsite vaccine clinic for employees.

**March 24**

PRH closes online vaccine waiting list and opens vaccine scheduling dedicated phone line.

**April 5**

Vaccine eligibility opened to general public age 16+

**April 27**

PRH celebrates administering 10,000 doses of the COVID-19 vaccine.

**May 13**

CDC approved Emergency Use Authorization of COVID-19 vaccine for those 12+



# Working together

to fuel our healthcare team

**The Ridge Café**, located on the ground floor of Prairie Ridge Health, offers an inviting atmosphere with a garden patio, ample light, a Made My Way breakfast, sandwich, wrap and salad menu, and a team of culinary enthusiasts who have kept things fresh during the everchanging protocols of the COVID-19 pandemic.

Prior to the pandemic, the café was a place for the community to gather, attend educational sessions, and eat fresh, healthy food. But when COVID-19 hit, the cafeteria had to close its doors to the public and put strict guidelines in place to allow Prairie Ridge Health team members to continue to use the café services.

“There was a lot of uncertainty, but the one thing that we knew we needed to do, was keep feeding people in a safe way,” said Emily Moore, Manager of Culinary, Nutrition and Diabetes Services.

Pivoting was the name of the game. The culinary team held daily huddles to review CDC recommendations, ensure team member safety, check processes, and problem solve product shortages and delays. Initially, it was unclear how the virus was transmitted, so all food was individually wrapped and served in disposable containers. All self-service and non-packaged food was prohibited.







Seating areas in the coffee shop and café were closed in order to protect customers and comply with federal and state mandates related to the containment of COVID-19. Pick-up, take home meals and grab-and-go offerings were offered in both retail locations, and patient meal services continued as usual.

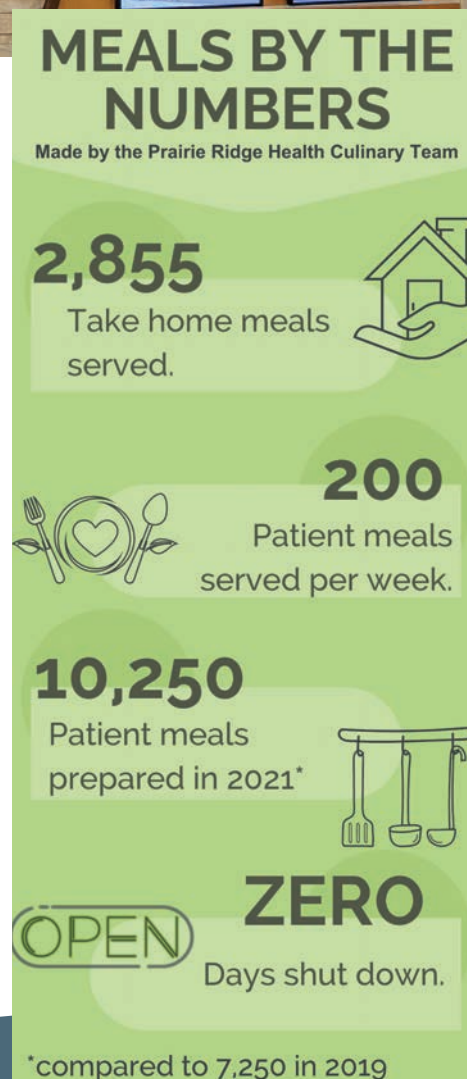
The take home meals gained popularity with team members and continue to be offered today as a way to make mealtime at home less stressful. The full meal offerings include a protein, a starch, and a vegetable, providing a nutritious meal for a family of four. Additional take home offerings include appetizers and specialty baked goods. Approximately 2,855 take home meals have been made since the pandemic started in March 2020.

When asked what she was most proud of through this process, Emily said “I’m most proud of my team. They’ve continued to show up every day with positivity and flexibility in this really challenging time and create fresh, healthy meals. We never stopped feeding our patients and our staff, and I’m so proud of them for that.”

The culinary team, led by Executive Chef Melissa Osterhoff and supported by a sous chef, has continued to adjust as COVID-19 protocols change. The café is now open for PRH team members and outpatients.

In 2019 the culinary team prepared an estimated 7,250 meals (139 meals a week) for patients, and in 2021 this increased to 10,250 meals (200 a week). These numbers do not include dietary specific orders for ER, observation, oncology and swing bed patients.

[Learn more about our café at prairieridge.health/guest-services](https://prairieridge.health/guest-services)



# *Increasing Accessibility*

for better patient care





Prairie Ridge Health's (PRH) new clinic, located at 134 Corporate Drive in Beaver Dam, opened its doors to patients on Feb. 1, 2022. The brand-new 13,000 square-foot building, located just off the Industrial Drive exit on Highway 151, offers twice the space of the clinic's previous Maple Avenue location and is home to nine providers and five therapists.

"The convenient location, modern architecture and open design of the new building offers a welcoming environment for our patients," said Hannah Young, PRH Director of Clinic Operations. "We look forward to continuing to care for Beaver Dam and the surrounding communities."

PRH broke ground for the clinic in the spring of 2021 in order to expand service offerings to the Beaver Dam community. Architectural design was completed by Eppstein Uhen Architects and the build was completed by FCM Corporation. The new clinic offers orthopedics, obstetrics and gynecology, diabetes and clinical nutrition, rehabilitation services (physical, sports, and occupational), family medicine, and general surgery. A modern 1,500 square-foot therapy gym, with all new equipment, provides ample natural light for a healing environment. Medical imaging and laboratory services are onsite for convenience. A wellness walkway is located outside the clinic for PRH team members.

Since 2014, the clinics have grown to three locations (Columbus, Beaver Dam and Marshall), which are the home of 18 providers offering 12 different service lines including: Orthopedics, General Surgery, OB/GYN, Rheumatology, Family Medicine, Internal Medicine, Diabetes and Clinical Nutrition, Medical Imaging, Physical Therapy, Occupational Therapy and Lab.

For more information about our clinic and rehabilitation services, visit [www.prairieridge.health](http://www.prairieridge.health) or call 920-356-1000 or visit [prairieridge.health/beaver-dam-clinic](http://prairieridge.health/beaver-dam-clinic)



**PRH Clinic Beaver Dam team members  
and PRH Board of Directors representatives**

# Achieving excellence through innovation

The Partners of the Wisconsin Hospital Association (WHA) bestowed two awards to the Volunteers of Prairie Ridge Health (PRH) and John Russell, President and CEO of PRH, during the Partners of WHA virtual state convention in October 2021.

The Volunteers of PRH received the Partners of WHA 2021 Wisconsin Award for Volunteer Excellence in Community Outreach and Collaboration in recognition of their innovation, creativity, and leadership in the PRH Hunger Care Program.

In July of 2019, PRH and the Volunteers of PRH partnered with Second Harvest Food Bank to provide heart healthy and diabetes friendly food to food insecure individuals in the hospital's service area. Eligible recipients are screened for food insecurity, diabetes, and heart health conditions. Recipes using items in the food package are provided each month and the Prairie Ridge Health nutrition team is available by phone to answer any questions about how to use ingredients.

Without likelihood of funding from SHFB in 2021, the Volunteers of PRH secured funding for the Hunger Care program through their annual Lights of Love. In addition, the Volunteers of PRH assist in organizing and packaging produce for pick up, staff the monthly pick-up day at the hospital, and help load the food into the vehicles. During COVID-19, the volunteers coordinated a drive thru pick up to ensure the families received the support they needed.

"The COVID-19 pandemic required creative and quick thinking to secure funding, and to ensure a no-contact distribution to decrease the risk of potential transmission. The volunteers were instrumental not only in providing funding, but in coordinating the drive-thru plan for the program." said Rachel Selm, RDN, CD, Clinical and Community Registered Dietitian Nutritionist.

John Russell was nominated by the Volunteers of PRH and named the recipient of the Partners of WHA 2021 Best of the Best Administrative Award, honoring one top, on-site administrator of a Wisconsin hospital who demonstrates a cooperative, supportive, enthusiastic, and well-defined relationship with the hospital's volunteer organization.

"During the COVID-19 pandemic our administrator wrote letters to our volunteers every few months. These letters were mailed directly to each member of our volunteer organization," said Jolene Gill, Volunteers of PRH Chairperson. "Because there was no face-to-face contact available at that time, it kept our volunteers informed as to the decisions being made and processes taking place at the hospital. Being included as a part of the organization during a time when many of us felt alone meant so much to all of us. It was through this communication, that our volunteers were brought back to the hospital slowly beginning in June 2020 and a new greeter position at our main entrance evolved."





# Introducing

## our new Medical Staff members

### Bridget Sharkey, APNP, FNP

From housekeeping to dietary, to Certified Nursing Assistant (CNA) to Nurse Practitioner, Bridget Sharkey, APNP, FNP, has spent her life caring for her community.

When she was young, Bridget and her sister volunteered at a nursing home where her mother was a CNA. The two assisted with resident activities. In high school Bridget worked in housekeeping and laundry, then as a dietary aid in the kitchen. She took the necessary certifications, became a CNA, and continued down the healthcare path throughout college. She graduated from the University of Wisconsin Oshkosh with her RN and completed rotations in the Madison area in Intermediate Care, Critical Care, and Emergency Services.

In 2014 she came back to Columbus to work with patients at the Prairie Ridge Health Clinic in Orthopedics and General Surgery. "It wasn't until I saw how a community hospital functions in a clinic setting that I knew what I wanted to do next."

In 2017 she decided to focus on primary care and went back to school (Bradley University in Peoria, IL) to complete her Nurse Practitioner Degree. She transitioned to a Nurse Practitioner at the Prairie Ridge Health Clinic, where she began seeing patients as a family medicine provider in July 2021.

"Family Medicine is really nice because it is very broad, which can make it challenging, but it is really rewarding to see the whole family, from newborns to grandparents," said Bridget. "You are able to establish a trusting relationship with the whole family. And being in a rural clinic setting gives you more opportunities to be involved in the community's needs."

"I enjoy living in a small community," she added. "I think it makes the job much more rewarding having the ability to take care of your neighbors and your community."

**For more information or to make an appointment with Bridget Sharkey, APNP, FNP, call the Prairie Ridge Health Clinic at 920-623-1200.**



**Bridget Sharkey, APNP, FNP**  
Family Medicine

# Investing

## in a healthy future

Prairie Ridge Health, Inc. experienced unprecedented growth in volumes and revenue in 2021. It was difficult to budget for fiscal year 2021, as it was hard to predict what the year would look like due to the ongoing COVID-19 pandemic. Total net revenues were 14.9% higher than budget due to continued higher inpatient volumes as well as growth in our outpatient and clinic volumes.

We are extremely grateful to be able to grow in the ways we serve the healthcare needs of our communities. In 2021, we opened a mass vaccination clinic out of our former pharmacy space, staffing it with current team members from multiple departments. We continued to operate the drive-thru testing site and began offering monoclonal antibody infusions. All of this was on top of our volume growth from historic levels prior to the pandemic. Consequently, income from operations was extremely favorable to budget for the year, surpassing the income for any previous year.

We continue to invest in the health of the communities we serve. In 2021, we constructed the new expanded clinic in Beaver Dam. This \$5.3M investment, including the building and equipment, offers us additional capacity to meet the healthcare needs of Beaver Dam and the surrounding area. In addition, we purchased \$1.2M in routine capital expenditures to replace and update hospital equipment and infrastructure to continue to provide our services locally. We also invested in our team by adding over 6% to our overall workforce to meet the demand of growing patient volumes.

Reflecting on this year of tremendous growth for Prairie Ridge Health, we remain in a strong financial position and are thankful for your support and partnership. We are grateful you've entrusted us with the stewardship of our resources to continue living out our mission: By building caring relationships with those we serve, we guide the journey to health and wellness.



**Melissa Mangan, CFO**  
Vice President of Finance

### Income Statement

	FY2021	FY2020
Net Patient Revenue	\$63,742,254	\$48,387,970
Other Revenue	1,875,002	1,679,978
<b>Total Revenue</b>	<b>65,617,256</b>	<b>50,067,948</b>
Salaries & Benefits	29,976,571	27,208,918
Other Expenses	21,430,987	19,008,730
Depreciation & Amortization	3,730,715	3,389,841
<b>Total Expenses</b>	<b>55,138,273</b>	<b>49,607,489</b>
Income from Operations	10,478,983	460,459
Other Income	7,815,816	7,128,637
Revenue in Excess of Expenses	\$18,294,799	\$7,589,096



## Assets

	FY2021	FY2020
Cash & Investments	\$28,813,271	\$18,247,097
Patient Accounts Receivable	11,191,417	7,764,703
Other Current Assets	3,331,249	3,189,933
<b>Total Current Assets</b>	<b>41,335,937</b>	<b>29,201,733</b>
Assets Limited as to Use	30,055,862	27,665,208
Property & Equipment - Net	42,644,709	40,846,238
Total Other Assets	1,685,913	1,512,704
<b>Total Assets</b>	<b>\$115,722,421</b>	<b>\$99,225,883</b>

## Liabilities & Net Assets

	FY2021	FY2020
Current Long-term Debt	\$1,552,153	\$1,490,097
Accounts Payable	3,375,021	2,591,574
Accrued Compensation & Related Liabilities	3,478,468	2,922,376
Other Current Liabilities	3,420,331	5,468,300
<b>Total Current Liabilities</b>	<b>11,825,973</b>	<b>12,472,347</b>
Total Long-term Liabilities	24,175,328	25,694,444
Total Net Assets	79,721,120	61,059,092
<b>Total Liabilities &amp; Net Assets</b>	<b>\$115,722,421</b>	<b>\$99,225,883</b>

## Our Services

The dedication and commitment of a strong active medical staff allows Prairie Ridge Health to offer an array of services.

Anesthesia Services  
Audiology  
Breast Health Services  
Cancer Navigation  
Cardiac Rehabilitation  
Diabetes & Nutrition Services  
Education & Support Groups  
Emergency & Urgent Care  
Infusion Therapy  
Intensive Care (ICU)  
Laboratory  
Lifeline  
Medical Imaging (CT, MRI, 3D Mammography, Nuclear Medicine, PET Scan, Radiology, Ultrasound)  
Medical Surgical/Inpatient Care  
Occupational Health Services  
Occupational Therapy  
Physical Therapy  
Prairie Ridge Health Clinic (Family Practice, General Surgery, Gynecology, Internal Medicine, Clinical Nutrition & Diabetes Services, Obstetrics, Orthopedics, Physical and Occupational Therapy, Rheumatology)  
Prairie Ridge Center for Orthopedic Excellence  
Pulmonary Rehabilitation  
Respiratory Therapy & EKG  
Speech Therapy  
Sports Medicine & Athletic Training  
Surgical Services  
Swing Bed  
Women's & Childbirth Services

# Giving Back to the community

Prairie Ridge Health makes an important investment in Columbus and the surrounding communities each year - an investment in your health. This is done through a wide array of programs and services, including free and discounted medical care, free screenings, free educational programs and trainings, as well as health fairs and community events.

BENEFIT CATEGORY	FY2021		FY2020	
	PEOPLE SERVED	BENEFIT COST	PEOPLE SERVED	BENEFIT COST
Uncompensated Medicaid Patient Cost	7,435	\$1,770,891	5,411	\$1,536,113
Community Care Cost (Free & Discounted Care)	1,036	323,363	836	261,348
Health Education & Community Outreach	837	66,305	830	62,275
Health Fairs & Community Events	2,659	26,361	1,101	12,709
<b>Total</b>	<b>11,967</b>	<b>\$2,186,920</b>	<b>8,178</b>	<b>\$1,872,445</b>

### Community Events, Sponsorships, Programs

- Chambers of Commerce of Columbus, Fall River, Marshall, Sun Prairie, Beaver Dam, and Waterloo
- Sharps Collection Program - DRIVE THRU
- Pedal Days - VIRTUAL
- Cancer Support Group - VIRTUAL
- Diabetes Support Group
- Live-It! Real Life Nutrition for Teens Program - VIRTUAL
- Hunger Care Program - DRIVE THRU
- Hands Only CPR Training - INDIVIDUAL & VIRTUAL
- Job Shadow & Mentor Program - VIRTUAL and CASE BY CASE
- SafeSitter - VIRTUAL
- Medication Take Back Day - DRIVE THRU
- Healthcare Career Scholarship Program
- National Night Out
- CPR and CPR & First Aid Programs - Individually & Off Site
- Marshall Bike Rodeo
- Pardeeville Job Fair
- Project CLEAN & Opioid Task Force
- Mobile Vaccine Clinics - Sun Prairie, Columbus, Beaver Dam

***\*Some events and classes were postponed, held virtually, offered in a different format, or cancelled due to COVID-19.***



# Giving

## to the Prairie Ridge Health Foundation

The Prairie Ridge Health Foundation supports the hospital's mission through the distribution of funds to various hospital programs and services. Funds are generated through donations, both monetary and in kind. PRH Foundation donations made the following possible in 2021:

- **Therapy Equipment & Furnishings**  
Through the A Step Forward Capital Campaign, for the new Rehabilitation Services Department and Cardiac Rehabilitation.
- **Gastroscope** for the Surgery Department.  
To provide high-resolution images during endoscopy procedures to help detect stomach conditions such as gastritis, ulcers and cancer.
- **Water & Ice Machine** for Cardiac Rehabilitation  
To provide water for our Fitness for Life and Cardiac Rehab patients to ensure proper hydration during their supervised exercise programs.
- **Wheelchairs & Walkers** for Hospital Main Entrance  
To transport patients and visitors throughout the hospital and clinic.
- **Hunger Care Program** for Diabetes Services  
To provide fresh, healthy food monthly for Diabetic and Pre-Diabetic patients who have been identified as food insecure.
- **Leg Stand\*** for Medical Imaging  
To elevate extremities for portable trauma imaging.
- **Manual Standing Lift\*** for Emergency Department  
To aid patients moving from a sitting to a standing position.
- **Nine Zebra Printers\*** for Laboratory Services & Emergency Department  
To supply each patient room with a printer for lab reports.
- **Platform Truck & Deluxe Mail Cart\*** for Materials Management. To deliver supplies throughout the hospital.
- **LymphaTouch Therapy Device\*** for Rehabilitation Services To provide negative pressure treatment for acute & chronic edema, pain management, soft tissue restrictions, scars and fibrosis.
- **Tereboot Leg Positioner\*** for Anesthesia  
To assist with peripheral nerve blocks that provide pain relief for any kind of ankle, foot or lower extremity surgery.
- **Refinishing of Bassinets\*** for Childbirth Services  
To refresh and refinish the 5 bassinets in the birthing suites.
- **Helping Hands Program**  
A Grateful Patient Program that encourages patients and visitors to recognize team members who have gone above and beyond.
- **Dental Health Supplies** for Flu Kits for the ER  
To provide patients who present with the flu new toothbrushes, toothpaste and floss.
- **Wig Program** for Cancer Navigation Program  
To provide wigs for patients undergoing cancer treatment.
- **Mammography & Biopsy After Care Kits**  
with help from our local high school volleyball, football, and basketball teams.
- **Nursing Scholarships** for employees and high school students entering or furthering a nursing career.
- **Emergency Patient Assistance Funds**  
to assist patients with emergent needs, such as transportation, clothing, etc.
- **Growth of the Endowment**  
PRH Foundation endowments: general endowment, women's health endowment, infrastructure and equipment endowment, and community education endowment.

\*Purchased through team member donations made to our Employee Giving Program.

# Inspired by you

## 2021 - 2022 Foundation Board of Directors



**Chair**

**Julie Bergholz**



**Vice Chair**

**Patrick Vander Sanden**



**Secretary/  
Treasurer**

**Lori McNulty**



**Sheldon Benzine**



**Ann Berg**



**Anne Donahue**



**Jill Huizenga**



**John Russell  
PRH President & CEO**



**Kristi Line  
PRH Foundation Executive Director**



**Deb Krebs**

### Donations Given to Departments and Programs

Capital Campaign for Rehabilitation Services	\$ 48,176
Wireless Patient Call System	\$ 32,675
Employee Giving	\$ 24,727
Greatest Need	\$ 24,727
Emergency Services	\$ 6,105
Women's Health Endowment	\$ 5,351
Breast Health	\$ 4,524
Cardiac Rehab	\$ 850
Wheelchairs	\$ 760
General Endowment	\$ 752
Rehabilitaiton Services	\$ 420
Wellness Walkway	\$ 400
Community Education Endowment	\$ 301
Equipment/Infrastructure Endowment	\$ 301
Volley for a Cause	\$ 300
Gastroscope	\$ 50
Lifeline	\$ 20
Respiratory Therapy	\$ 10

### Fundraising Events

Golf Classic	\$ 17,888
Virtual Toasts & Tastes	\$ 12,151
Chicken Shoot	\$ 8,095
Hoops for a Cure	\$ 1,070
<b>Net Revenue from Events</b>	<b>\$ 38,134</b>

#### Designated toward :

Gastroscope	\$ 29,539
General Endowment	\$ 8,595

*Leaving  
a Legacy*

**Total Donations**  
10/01/2020 - 9/30/2021  
**\$175,586**



# Thank you

## for making a difference

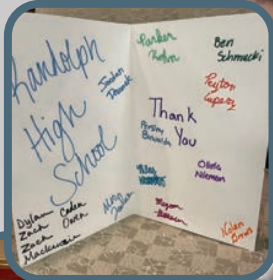
Throughout the past year, the Prairie Ridge Health Foundation has worked to grow its general endowment to provide for future community needs. An endowment allows a donor to leave a lasting legacy. In support of this endeavor, the PRH Foundation has established a planned giving program. In the next year the PRH Foundation will grow its connection to the communities it serves by continuing to generate funds for the programs and services you and your family need, right here, close to home. The following individuals, organizations, and businesses gave donations to the Prairie Ridge Health Foundation between October 1, 2020 and September 30, 2021.

Anonymous Donors	Kristine Braker	Columbus/Fall River Sno Blazers	Fall River Rod & Gun Club	Roger & Elaine Grossman
Joyce Abegglen	Sara Brandsma	Bernard Conlin	Farmers & Merchants Union	Sarah Gruszynski
Adams-Columbia Electric Co-op	Debbie Braun	Patrick & Susan Connors	Bank	Sandra Haack
Cathaleen Ali	Diane & William Breunig	Eric & Jamie Cotter	Patricia Fauser	Jenni L Hamann
Heather & Guili Alvarez	Dr. Douglas & Kathleen Bricker	Joan & Jeff Coughlin	Matt & Dawn Faust	Angela Hanni
American Family Insurance	Madolyn Brown	Country Meat Cutters	FCM Corporation	Curtis & Linda
Americollect	Kenneth & Betty Buss	Cramer Family Foundation	Jerome & Joann	Hanson Family
Jerry & Kathy Andler	Erin Bussian	Deb Csiacsek	Fedkenheuer	Loni Hasenfuss
Aon	Busy B's Diversified	Kathryn Cullen	Sue Ferguson	Dorothy Hasey
Associated Bank	Katie Caine	Mack Daeda	Brigitte Firari	Du Wayne & Judith
Christopher & Alex Bachman	Cambria-Friesland High School	Dairy Farmers of Wisconsin	First Business Bank	Hatzinger
Janis Bachofen	Athletics	Bill Daley	Ashley L Fischer	Daniel & Diane Hayden
Jodie Ballweg	Sarah Campbell-Ziegler	Thomas & Denise Daley	LaVern & Mary Fischer	Family & Friends of
Shirley Banetzke	Capital Newspaper	Jessica & Casey Davidson	Fischer Family Farms	Veronica Helwig
Bank of Sun Prairie	Dawn & James Carlson	Carrie & Kenneth Davin	Ray & Karen Fleegal	Michelle & Bill Hemling
James & Wenette Barden	Carol A. Valley, CPA	Dean Health Plan	Family & Friends of	Dr. Charles & Jamie
Larry & Lori Bartruff	Kelly Carpenter	Chris & Jennifer DeLapp	Donna Freimuth	Hendrix
Stephen & Evelyn Baus	Renee Carthew	Randy & Susan Dettmann	Dr. Gary Galvin &	William & Catherine
Betty Baxter	Amy Case	Emily & Shawn Dilley	Lee Gasper-Galvin	Herrmann
Dr. James & Elizabeth Beck	Central Beauty Shoppe	Anne Donahue	Julie Gay	Bevalee Hilbert
Dr. William Becker	Central Contracting Electric	Kristin & Jeffery Downing	Helen Gehrke	William & Nan Hoene
Emma H. Bennett	Service	Drexel Building Supply	Brian Geiger	Jennifer & Chris Homman
Sheldon & Jeana Benzine	Cercis Brewing Company	Pamela Duborg	Carol Geiger	Amy Hopp
Charles & Ann Berg	Cheramy Creative	Rosemarie Duesing	Jason & Katy Geiger	Cynthia Hosely
Tom & Julie Bergholz	Chipped and Cracked Nails	Duke Energy Foundation	Angi & Paul Genco	Gina Huebner
Vernon & Lois Biel	City of Columbus	Angela Dylak	Anna Godfroy	Patricia Huggett
Bob & Carol Black	Club 60	E.K. Machine Co Inc.	Clifford & Krista Goeller	Jenna Hupf
Black Woodworks	Dr. Robert & Patricia A. Coe	Colleen Eckert	Good Karma Brands	Dennis & Kara Inabnet
Marilyn Blank	Color X Salon	EfficientC	Luanne & Mark Gould	Steve & Laurie Jacob
Diane Bleich	Columbia Anesthesia	Eide Bailly	Grandpa Ray Outdoors	Milan & Cheryl Jelic
Eugene & Janice	Lee Columbus	Lisa Emler	Kim Grebel	Elizabeth Jens
Boelte	Columbus Chemical Industries	Eppstein Uhen Architects	Green Bay Packers	JH Findorff & Son, Inc.
Rebecca Boland	Columbus High School Students	Eventus Wealth Advisors	Joyce Gretzinger	Charles Johnson
Eric & Dana Borgerding	Columbus Nutrition	Kristine Evers	Family & Friends of	JSD Professional Services
Travis & Alyssa Bowe	Columbus Water & Light	Fall River Foundry	Phyllis Griffith	Ruth Juech
Andrew & Melissa Bradley	Commission	Fall River High School Athletics	Robert & Janet Groh	Jenny Juliuson

Nick & Krissy Junk	Madison Emergency Physicians	Todd & Connie Piekarski	Jerry & Roberta Schaefer	Faye Underdahl
Peter & Judith Kaland	Madison Originals	Pine River Pre-Pack Inc.	Bob & Peggy Schleicher	United Wisconsin Grain Producers
Delores Karow	Haley Mains	Rep. Jon & Christine Plumer	Jerome & Christine Schleicher	Ben & Eva Van Horn
David & Terri Kelm	Michael & Melissa Mangan	Peggy Pope	Patricia Schmitt	John & Charlene Van Roo
Dr. Heather Kennedy & Tom Lundgren	Gary & LaVonne Marks	Faith Porter	Susan Schmutzer	Craig & Rouxle Vana
Edward & JoAnn Kessenich	John & Darlene Marks	Joclyn R. Powers	Kimberly Schoenberger	Patrick & Kristin Vander Sanden
Jody Kessenich	Marshall Lions Club	Wayne & Darlene Powers	Karen Schrader	David & Donna Vanness
Kestrel Ridge Golf Club	Dr. Asghar Marwat	Patricia Premo	Tabatha Schraufnagel	Jeff & Deborah Ann Venden
Sehr Khan	Scott & Sue Mathwich	John & Vaneece Prescott	Marilyn & Richard Schroeder	Marilyn Venden
Kiedinger, Inc.	Amy Mayr	PRH Centralized Scheduling, Registration, Information & PFCs	Gary & Diane Schuhmacher	Schultz's Cheese Haus
Nancy Kind	Caroline McAiley	PRH Culinary Services Department	Nanette Selk	Nanette Selk
Kaila Klawes	Deborah A McDonnell	PRH Emergency Department	Trish Selk	Clara Sennhenn
Shelby Klawes	Evelyn McNulty	Pam Pribbenow	Clara Sennhenn	Shared Imaging Services
Shirley Knudson	Kevin & Lori McNulty	Carina Price	Joan Sharp	Adrian Shaw
Marsha & Randy Koehn	Patrick McNulty	Rae Prisk	Adrian Shaw	Patricia Showers
John & Susan Koshel	Amanda Meier	John & Dorothy Priske	Linda Skjerly	Linda Skjerly
Elizabeth Kranz	Amanda & Jared Meyer	Teresa Pulver	Margaret Smith	Margaret Smith
Dr. Bruce & Pamela Kraus	Jeffrey & Julie Miles	Jolene Pyka	Richard & Carol Smith	Richard & Carol Smith
Mary Jo Kuenzi	Randy & Rhonda Minick	June Quade	Ute Smith	Ute Smith
Nick Kuenzli	Minuteman Press	Quarles & Brady	Jamie Soyk	Jamie Soyk
Charleen Kuhn	James Mobry & Juli Robbins-Mobry	Andy & Kate Raley	Jacqueline Stanek	Jacqueline Stanek
Erwin & Magdalena Kutzik	Jodi Mohns	Randolph Health Services	Carla Statz	Carla Statz
Candice La Vanda	Monona Plumbing and Fire Protection	Randolph High School National Honors Society	Frank & Patricia Statz	Frank & Patricia Statz
Sonja Lamb	Emily Moore	Nathan & Carolyn Reabe	Shannon Stiller	Shannon Stiller
Jennifer Lamorte	Mousehouse Cheesehaus	Brian & Janet Rehfeldt	Steve Stricker	Steve Stricker
John Lange	Connie Mullin	Abigail Reier	Angie Stuelke	Angie Stuelke
Catherine Langsdorf	Stefany Neef	John & Lu Ann Reuter	Bruce & Judith Sullivan	Bruce & Judith Sullivan
Catherine Lanzhammer	Robin Newton	Dr. Mark & Devra Rich	Jessica & Jon Sullivan	Jessica & Jon Sullivan
Timothy Larson	Jason & Brenda Niemi	Rio High School Athletics	Margaret Sullivan	Margaret Sullivan
Janelle & Tracy Lauersdorf	Dr. Matthew & Mallory Niesen	Judith Robbins	Rachel & Tim Svendsen	Rachel & Tim Svendsen
Lori Lawrence	Norscot	Robert & Jane Robbins	Jennifer Swiggum	Jennifer Swiggum
Jim Lawver	North Bristol Sportman's Club	George & Janet Roberts	Debra & Dwane Talg	Debra & Dwane Talg
Wilma Lenz	Elise Olson	James & Jacque Roberts	Dennis & Andrea Tamminga	Dennis & Andrea Tamminga
Joycelyn Lienke	Larry & Nancy Olson	Rock n Wool Winery	The Painted Crate	The Painted Crate
Ruth Lienke	Robyn Ortega	Bonnie Rostad	Ashleigh Theel	Ashleigh Theel
Lifestar Emergency Medical Services	Melissa & Kevin Osterhoff	Kerry & Ann Roundy	Theel & Sons	Theel & Sons
Lincoln Financial Group	Malissa Pamentor	Royal Neighbors of America Chapter 6215 Doylestown - Rio WI	Kathy Thiel	Kathy Thiel
Thomas & Nan Linde	Rob & Michelle Pasbrig	John & Rose Russell	Family & Friends of Merlin Thom	Family & Friends of Merlin Thom
Thomas & Nan Linde	Mackenzie Patrick	Donna Rychnovsky	Bonita Thomas	Bonita Thomas
Kristi & Joseph Line	John Pearson & David Dodd	Joanne Sampson	Constance & Terry Timper	Constance & Terry Timper
Joseph & Jennifer Lininger	George & Carol Peeper	Sassy Cow Creamery	Tom's Guns	Tom's Guns
John & Andrea Link	Pellitteri Waste Systems	Celia Saxe	William & Lori Toutant	William & Lori Toutant
Robert & Suzy Liverseed	Elizabeth Perkins		Andrew & Holly Tratar	Andrew & Holly Tratar
LMC Insurance & Risk Management			Patricia & Michael Turba	Patricia & Michael Turba
Lowell VFW Post 6841			Carol Twilt & Bud Grossman	Carol Twilt & Bud Grossman
Fredric & Cailin Lueders				
Judy & Greg MacDonald				

# Thank you

for making a difference





# Creating a culture of giving

The Volunteers of Prairie Ridge Health donated more than 7,500 hours of service to the hospital in 2021. Our volunteers serve our patients, healthcare team and community in a variety of ways including:

- **Main Entrance Greeter**
- **Perk Avenue Café Assistant**
- **Gift Shoppe Clerk**
- **Vaccination Clinic Transporter**
- **PRH Hunger Care Program Curbside Deliveries**
- **Main Entrance Planters**
- **Baby Caps for Newborns**
- **Rice Sock Assembling for Obstetric Patients**
- **Flu Kit Assembling for ER/Urgent Care Patients**
- **Scholarship Committee**
- **Patient Care Kit Assembling**
- **Mammography Care Kit Assembling**
- **Newspaper, mail, flower delivery to patients**
- **Walk In Wednesday Mammograms Greeter**
- **Community Resource Book Coordination**

*The Volunteers of PRH thank you for your continued support throughout the year. Proceeds from the volunteer sponsored events listed below provide funds for equipment and services at PRH.*

- |   |  |
|---|--|
| • <b>The Gift Shoppe at PRH</b>               | • <b>Apple Product Sale</b>                  |
| • <b>Lights of Love</b>                       | • <b>Holiday Cookie Sale</b>                 |
| • <b>Geranium Sale</b>                        | • <b>Euchre Marathon</b>                     |
| • <b>Drive Thru Soup &amp; Salad Luncheon</b> | • <b>Perk Avenue Café Donations</b>          |
| • <b>Virtual Nutman Sales</b>                 | • <b>Memorial &amp; Honorarium Donations</b> |
| • <b>Virtual Linen Sale</b>                   |  |

The Volunteers of Prairie Ridge Health donated more than \$17,800 in equipment to Prairie Ridge Health and scholarships to students in 2021.

- \$6,000 in Scholarships for High School Students Pursuing a Health Career
- \$5,000 Donation to Step Forward Campaign
- \$2,240 to PRH Hunger Care Program
- \$1,440 for 3 Wheelchairs for Main Entrance
- \$1,000 to Cancer Navigation Program for gas cards for patients
- \$1,000 Lifeline Home Emergency Response Alert Buttons and GPS units
- Community Resource Booklet
- Flu Kits for ER/Urgent Care Patients
- Photo USBs for Childbirth Services
- Flowers for Entrance Planters
- Lights of Love Trees for Main Entrance
- Perinatal Loss Program Memory Rings
- Rice Socks for OB Department

**2021 Drive Thru Soup & Salad Luncheon**



2022 Volunteers of PRH Board of Directors: Marlene Soulsburg - President, Sherry Jelic - Vice President & Community Health Education Chair, Andrea Tamminga - Treasurer, Barb Powley - Secretary, Jolene Gill - Past President (2021), Carol Black - Public Policy Education Chair

## PRAIRIE RIDGE HEALTH BOARD OF DIRECTORS



**Jennifer Homman**  
Chair  
(Rio)



**Jo Ann Evans**  
Vice Chair  
(Cambria)



**Pete Simon**  
Secretary  
(Sun Prairie)



**Randall Bobholz**  
Treasurer  
(Fall River)



**Matthew Niesen, MD**  
Chief of Staff  
(Middleton)



**Gary Galvin, MD**  
(Sun Prairie)



**Erin Jones**  
(Columbus)



**Julie Saniter**  
(Beaver Dam)



**Margo Francisco**  
SSM Health

## PRH Executive Team



**John Russell**  
President & CEO  
(Columbus)



**Jamie Hendrix**  
VP of Patient Care Services  
(Beaver Dam)



**Melissa Mangan**  
VP of Finance & CFO  
(Beaver Dam)



**Ann Roundy**  
VP of Employee Services  
(Rio)



Photo Courtesy of J.H. Findorff & Son, Inc.

# Prairie Ridge HEALTH

Inspired by you

## Hospital

1515 Park Ave • Columbus, WI 53925  
800.549.7511 | 920.623.2200

## Clinic

**Beaver Dam**  
134 Corporate Drive • Beaver Dam, WI 53916  
920.356.1000

**Columbus**  
1515 Park Ave • Columbus, WI 53925  
920.623.1200

**Marshall**  
301 W Main St • Marshall, WI 53559  
608.655.8181

[www.PrairieRidge.Health](http://www.PrairieRidge.Health)

