



Olson Mask

Made by: Clayton Skousen & Rose Hedges



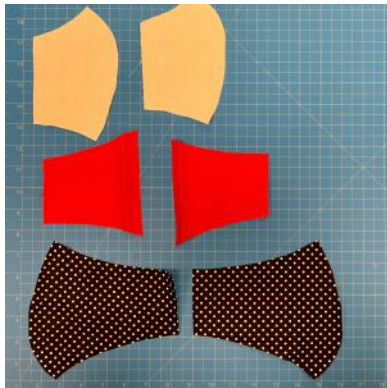
Materials Needed



- Cotton Weave Fabric (~1/2 yard is enough to make 2-3 masks)
- All-Purpose Thread
- Hair Ties (2)
- Straight Pins
- Scissors
- Double-Sided Skin Adhesive

Instructions

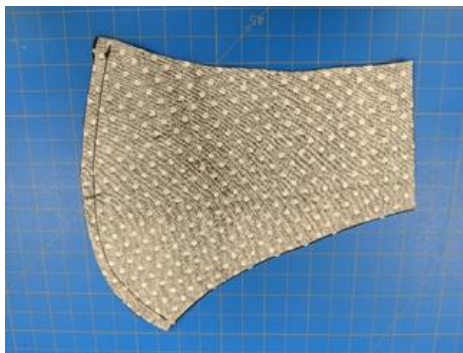
1 Using the patterns, cut one of each shape. You will need six (6) total pieces.



3 Sew *mouth 1* and *mouth 2* together along *side 3*.



2 Sew *face 1* and *face 2* together along *side 3*.



4 On *mouth 1* and *mouth 2* sew fold *side 5* over 1/4 inch and sew down..



Instructions - continued

- 5 On *cheek 1* and *cheek 2* fold *side 6* over 1/4 inch and sew down.



- 6 Match *cheek 1* and *mouth 1* at the dotted line (7). Sew a 1-inch tack at *side 1* and *side 2* where the two pieces overlap.



- 7 Repeat Step 6 for *cheek 2* and *mouth 2*.

- 8 With the fronts of the fabric facing each other, sew along the entire perimeter of the mask.



- 9 Use one of the slits between the mouth and the cheek to turn the mask ride-side out.



Instructions - continued

- 10 Add a hair tie to each side by folding the fabric on the end of the mask over the tie and sew down.*



- 11 Apply double-sided skin tape around the contour of the mask to create the required seal.



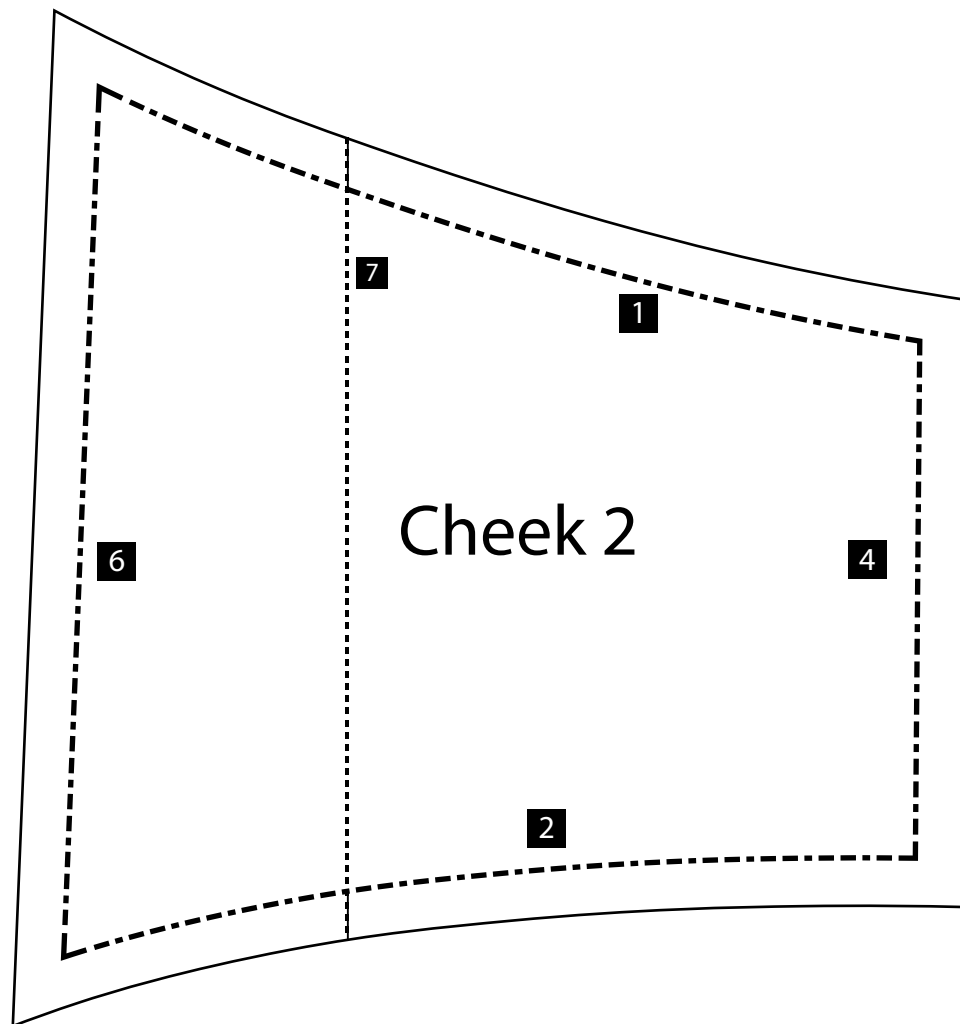
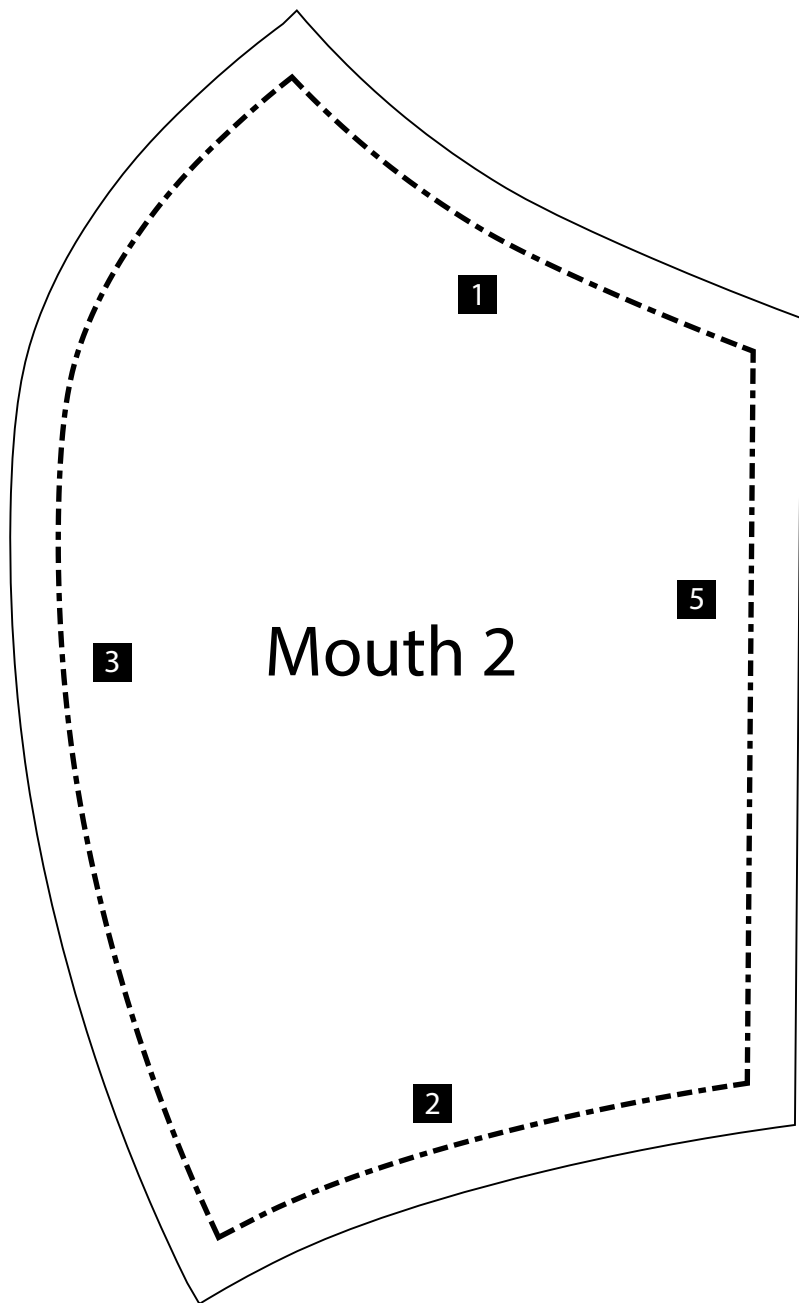
Additional Instructions

- Longer pieces of elastic cording may be used in place of hair ties to create different sizes.*
- Wax coated string may be used at the top of the mask to create bridge, allowing a better seal

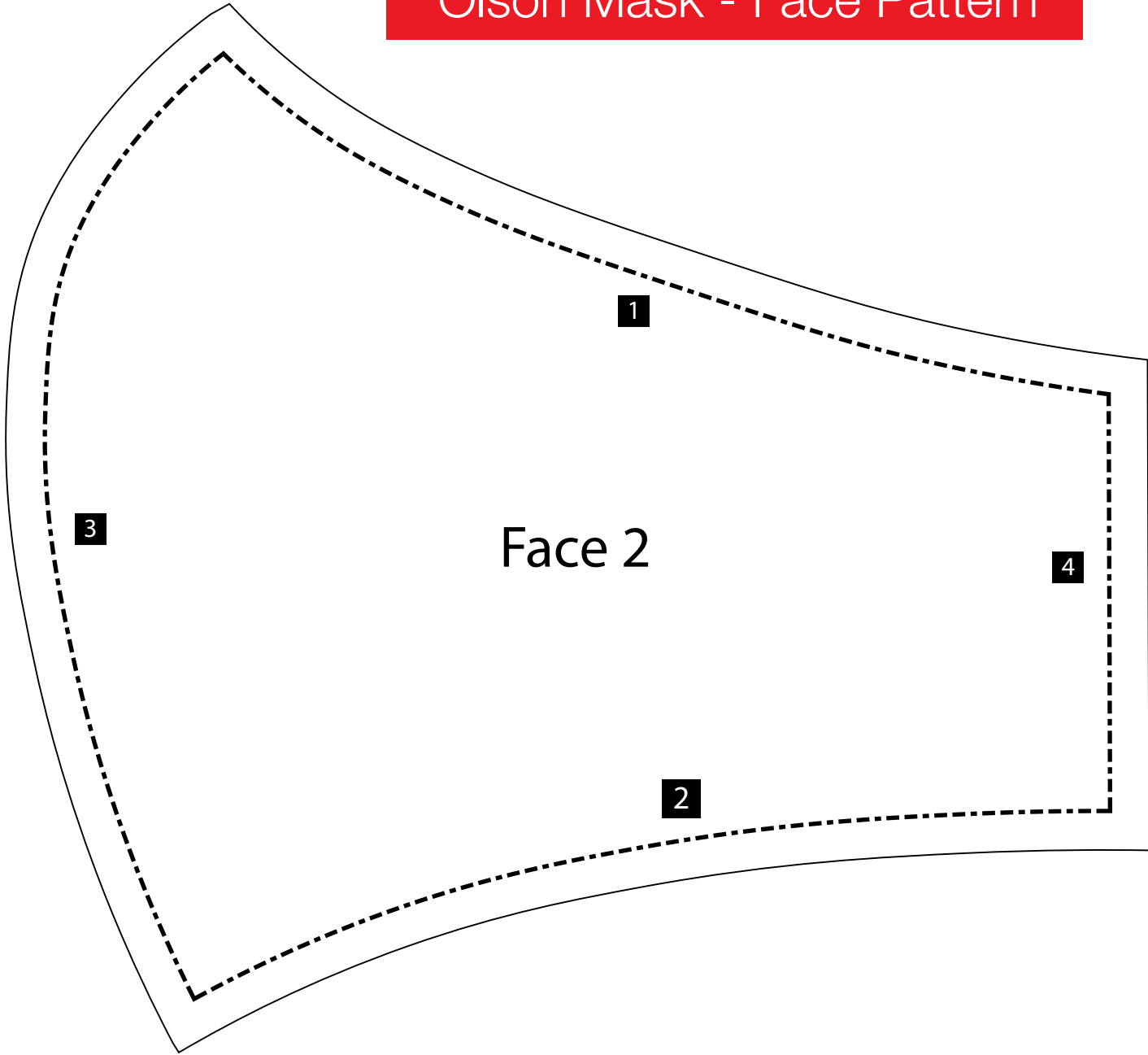
Masks may be mailed or dropped of at the hospital

Prairie Ridge Health
Attn: Kristi Line
1515 Park Avenue
Columbus, WI 53925

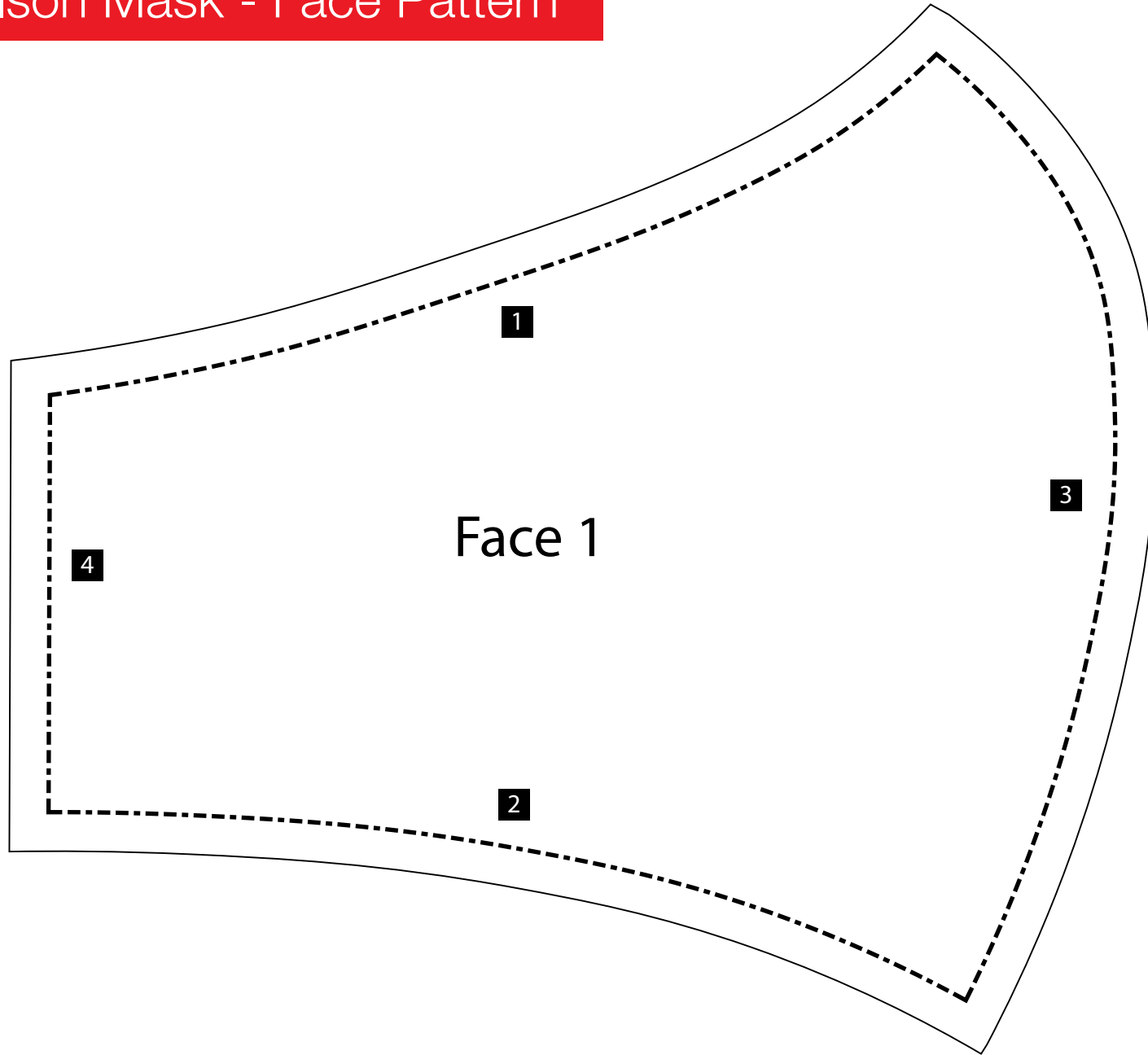
Olson Mask - Mouth & Cheek Pattern



Olson Mask - Face Pattern



Olson Mask - Face Pattern



Olson Mask - Mouth & Cheek Pattern

